

Product Data Sheet

0603 LED STRIP WHITE SERIES

2019.12-V01



Description

The 0603 white series strip are created with high intensity 0603 smd led mounted on a flexible printed circuit board (FPCB) with a strong 3M adhesive backing. It's a new strip design without any light dot. The flexible design of LED strips allows for the addition of beautiful and pure white light in almost any space you can imagine. The EVERLUSTER'S LED strips are a great way to provide professional grade, bright and comfortable accent lighting that will last for many years.

Product Features

- 0603 super small size smd led
- 180° light big view angle
- Dotless, SDCM<5
- Flexible lighting design
- Long life time

Application

- Home furnishing lighting
- Commercial lighting
- Linear lighting
- Office lighting, shopping center
- Any simplicity lighting design

Photos



Electrical And Optical Characteristics

| Product SKU | LED Qty's | Color | Voltage | Watt/foot (Meter) | Lumen/foot (Meter) |
|--------------------|-----------|------------|---------|----------------------|-----------------------|
| VT-F0603-280-24VWW | | 2700-3300K | | | 1500lm/m (457lm/ft) |
| VT-F0603-280-24VNW | 280 | 4000-4500K | 24V | 15W/m 4.58W/ft | 1600lm/m (488lm/ft) |
| VT-F0603-280-24VCW | | 6000-6500K | | | 1700lm/m (518lm/ft) |

*The above information are measured by EVERFINE integrating sphere with typical value.

*CRI>80 and CRI>90 can be choice.

*CCT may be +/-100K but always ordered from same bin and will present no noticeable differences perceived by the human eye.

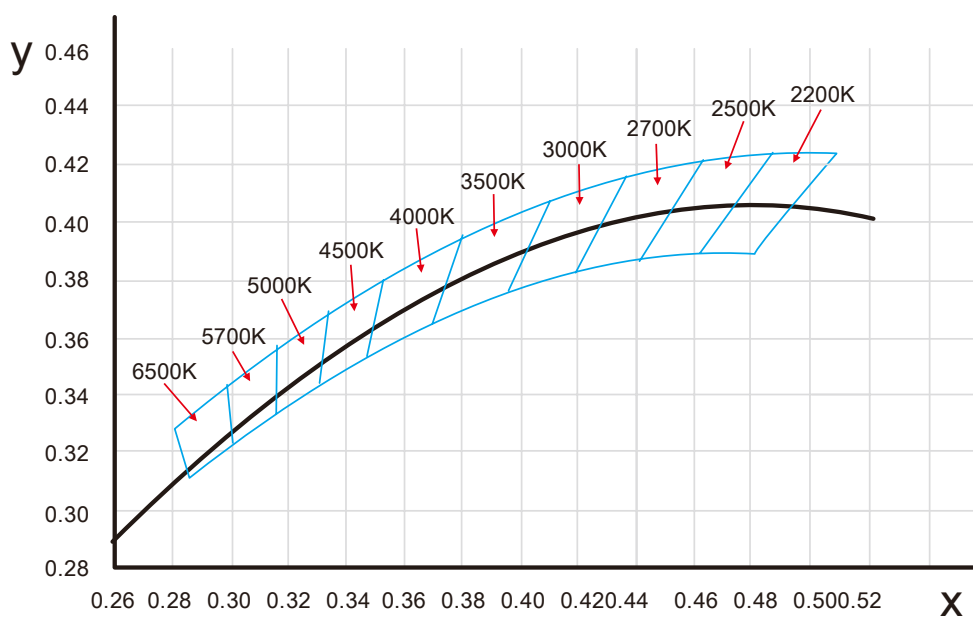
*Customized special color or CRI is acceptable.

*SDCM<5

Absolute Max. Value

| Parameters | Symbol | Max. | Unite |
|---------------------|--------|--------|-------|
| Forward Current | IF | 800 | mA |
| Power | PD | 19.5 | W |
| Antistatic | ESD | 2000 | V |
| Work Temperature | WT | -25-40 | °C |
| Storage Temperature | ST | -40-60 | °C |

(X ,Y) Chromaticity Diagram



Reliability Experiment

Optical Testing

| | |
|------------------------------|--|
| Spectrum Analysis | IES LM 79 (Lumen, CCT, CRI, XY, SDCM, wavelength) |
| Photometric Distribution | IES LM 73 (Lumen intensity distribution & Lux diagram) |
| Lumen Maintenance & Lifetime | IES LM 84 & IES TM28 |

Durability Testing

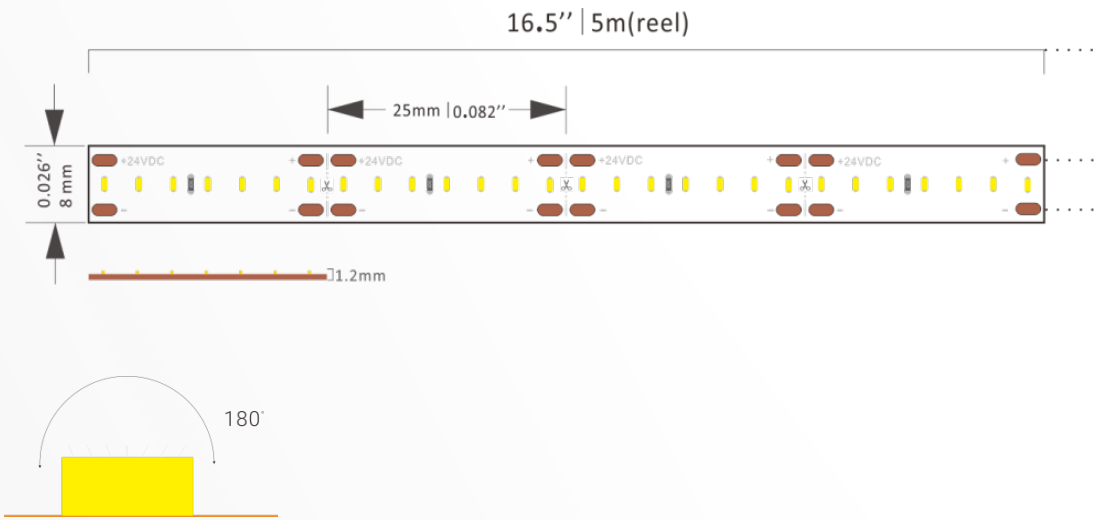
| | |
|--------------|---|
| Bending Test | Manufacturer-defined, 500 cycles |
| Swing Test | UL2388, >750 cycles |
| Tensile Test | Manufacturer-defined, > the weight of light in max. connection length double feed |
| Swing Test | Max connection length double feed Manufacturer-defined, >200 cycles |
| Ball Impact | IEC60598-1 & IEC60598-2-21 |

Environmental Testing

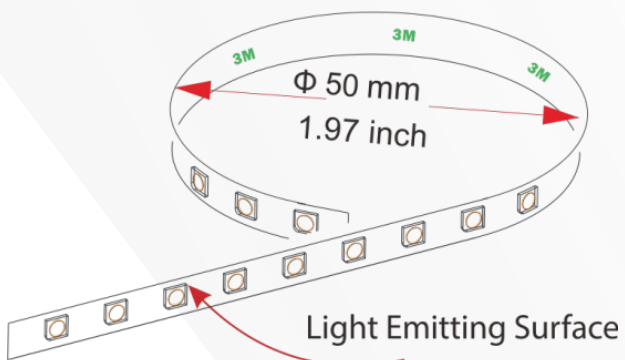
| | |
|------------------------|--|
| Salt Water Immersion | IEC60598-1, Salinity 4% |
| Swing Test | UL2388, >750 cycles |
| Outdoor Exposure | Manufacturer-defined |
| Flame Resistance | UL94 |
| UV Exposure | ASTMG 154, ISO 4892-3, UVA @ 340nm |
| IPX5, IPX6, IPX7, IPX8 | IEC60529 |
| Temperature Shock | Manufacturer-defined, -40°C - 60°C (typical temperature) |

Dimension

24V



Minimum Bend Diameter



Order Guide

| Brand | Strip Type | LED Type | LED Qty | Voltage | CCT/Color |
|-------|------------------|----------|---------|---------|---------------|
| VT | - | - | - | - | - |
| | FOB | 0603 | 60 | 12V | WW=2700-3300K |
| | F=Flexible strip | 2110 | 120 | 24V | NW=4000-4500K |
| | N=Neon strip | 2216 | 180 | | CW=6000-6500K |
| | | 2835 | 210 | | DW=2700-6500K |
| | | | | | |

* All Technical information in this document is subject to change. Copyright © EVERLUSTER.

Installation Guide

AC outlet
(OR AC source)

In Series

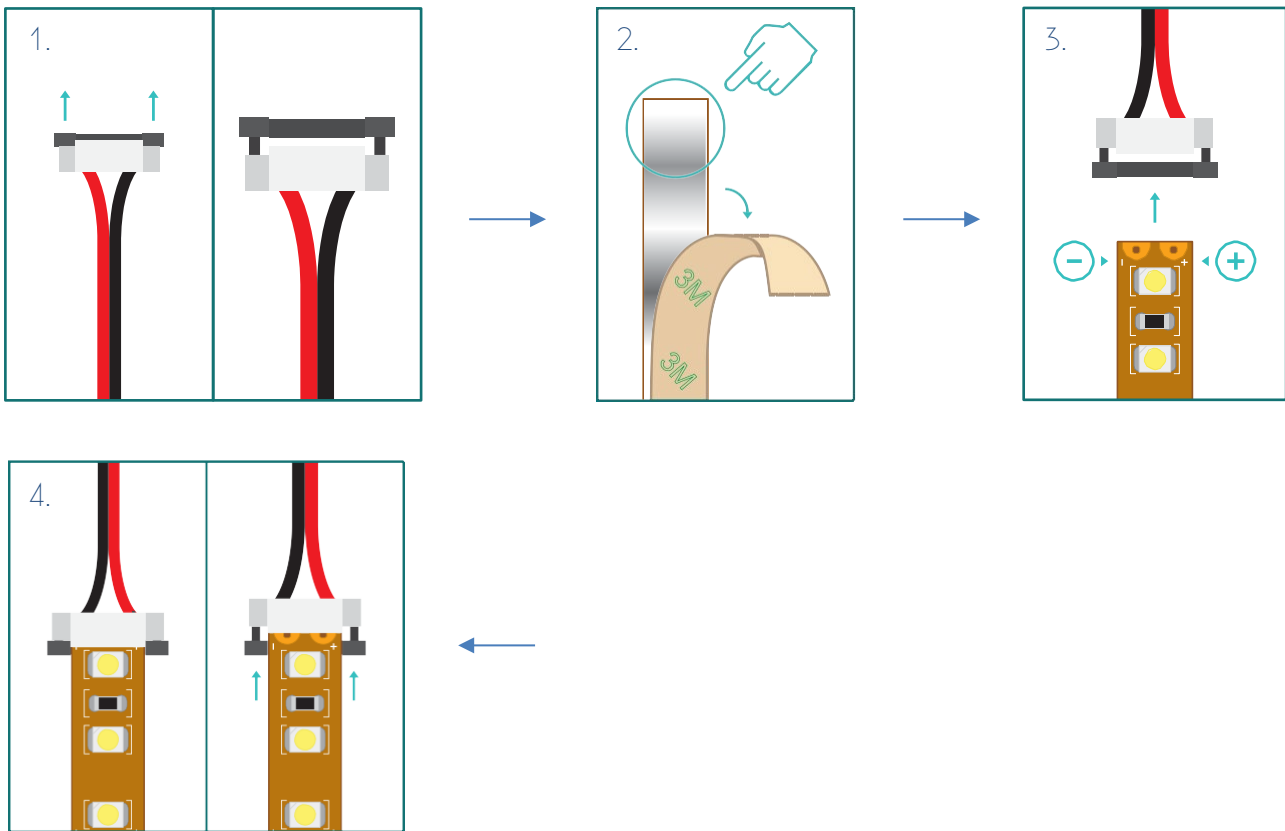


AC outlet
(OR AC source)

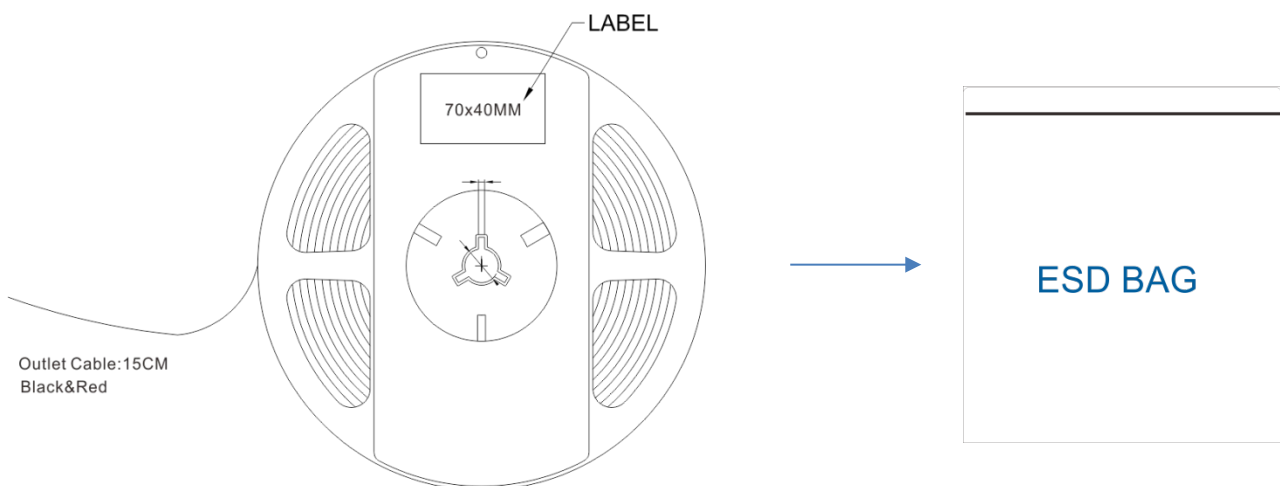
In Parallel



Solderless Connection Guide



Package



Safety And Disclosures

1. Installation must be in accordance with local and national electrical code regulations.
2. To ensure safety and correct installation, our strips are intended to be installed by a qualified, licensed electrician.
3. LED strip lights must be handled with care. Excessive handling, bending, and pressure may damage the product, voiding the warranty.
4. Do not install indoor LED tape light products in outdoor / wet location environments. Only use copper wiring. Use wires rated for at least
5. Each maximum run requires a dedicated power feed from the driver. Do not extend beyond the recommended maximum run length.
6. Do not modify product beyond instructions or warranty will be void.

Warranty Information

Consumer's Acknowledgment

When you purchase our products, you are agreeing to the terms and conditions outlined in our warranty section. We try our best to make recommendations, but the burden of proper installation, design, and maintenance relies on the purchaser.

Limited Warranty

This product has a 15 year limited warranty from the date of shipment. This warranty only includes the main product outlined in this specification sheet and does not include the additional accessories that are used as a reference. For warranty related questions please contact product support team at (sale@everluster.com).